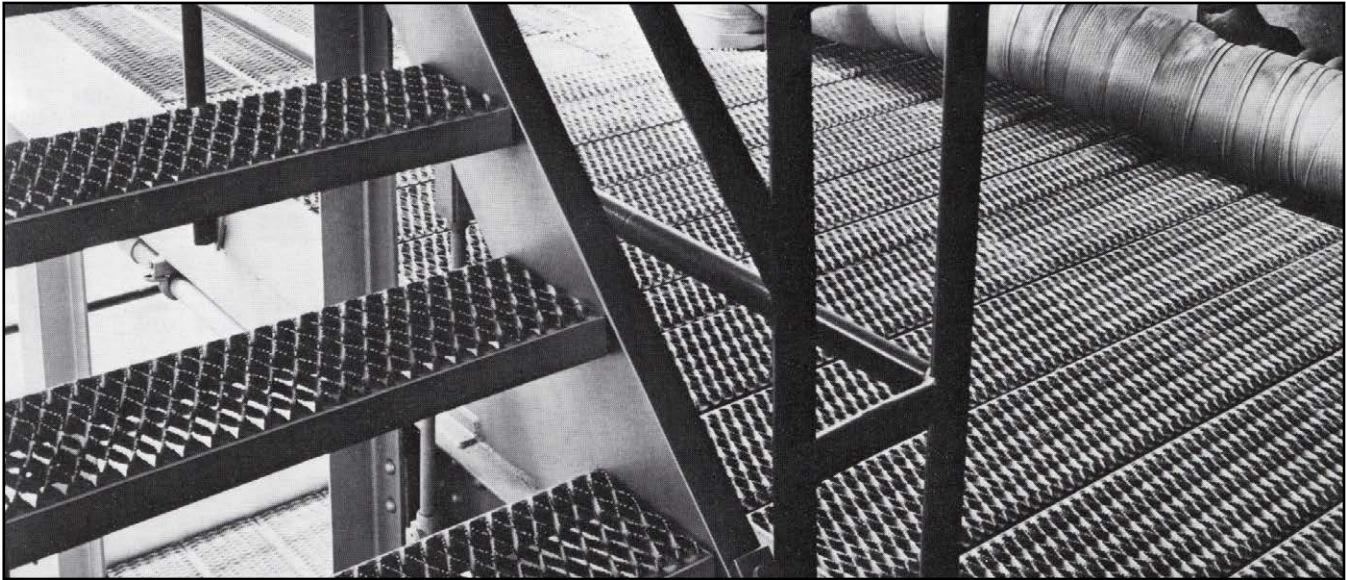


GRIP STRUT® STAIR TREADS

Safe Loading — Stair Treads

Load data below takes eccentric loads into consideration. Although load values include allowances for normal impact conditions and usual pedestrian traffic, be sure to make provisions in the structural design for special uses and loads involving unusual impact forces or vibratory forces. Load-carrying capacity of stair treads increases as side channel height and gauge or material increase.



U=Uniform Load (lb./ft.²) C= Concentrated Load (lb.)

		2-Diamond 4 ³ / ₄ " Depth				3-Diamond 7" Depth				4-Diamond 9 ¹ / ₂ " Depth				5-Diamond 11 ³ / ₄ " Depth			
Material		Steel				Steel				Steel				Steel			
Gauge		14		12		14		12		14		12		14		12	
Span	Channel Depth - in. (mm)	U	C	U	C	U	C	U	C	U	C	U	C	U	C	U	C
2'-0"	1 ¹ / ₂ " (38.1)	1191	472	1576	624	761	443	1006	587	549	435	750	595	434	425	575	563
	2" (50.8)	1978	783	2513	995	1262	737	1604	936	911	604	1158	917	721	573	916	897
2'-6"	1 ¹ / ₂ " (38.1)	764	378	1011	500	488	356	645	470	353	349	481	476	278	342	369	452
	2" (50.8)	1268	611	1611	797	810	590	1029	750	584	578	742	734	463	566	587	719
3'-0"	1 ¹ / ₂ " (38.1)	532	315	703	418	340	300	450	393	245	300	335	398	194	300	258	378
	2" (50.8)	882	524	1121	665	563	492	716	626	407	483	517	614	322	473	409	601
4'-0" (1)	2" (50.8)	498	394	633	501	318	372	404	472	230	364	292	463	182	356	232	454

(1) Intermediate stringer is recommended for spans over 4'-0".

		2-Diamond 4 ³ / ₄ " Depth				3-Diamond 7" Depth				4-Diamond 9 ¹ / ₂ " Depth				4-Diamond 9 ¹ / ₂ " Depth				5-Diamond 11 ³ / ₄ " Depth				5-Diamond 11 ³ / ₄ " Depth			
Material		Aluminum				Aluminum				Aluminum				Stainless Steel				Aluminum				Stainless Steel			
Gauge		.080"		.100"		.080"		.100"		.080"		.100"		304		316L		.080"		.100"		304		316L	
Span	Channel Depth in. (mm)	U	C	U	C	U	C	U	C	U	C	U	C	U	C	U	C	U	C	U	C	U	C	U	C
2'-0"	2" (50.8)	1328	526	1862	737	862	503	1208	705	607	481	867	687	610	483	525	416	396	388	607	595	394	386	338	331
2'-6"	2" (50.8)	850	420	1191	590	551	402	773	564	388	392	555	550	390	387	336	336	253	388	388	540	252	381	216	339
3'-0"	2" (50.8)	590	350	827	491	383	335	537	470	270	327	385	458	271	323	233	279	176	321	270	450	175	319	150	275
4'-0" (1)	2" (50.8)	332	263	465	369	215	252	302	353	152	245	216	344	152	244	131	210	99	241	151	338	98	241	84	221

(1) Intermediate stringer is recommended for spans over 4'-0".

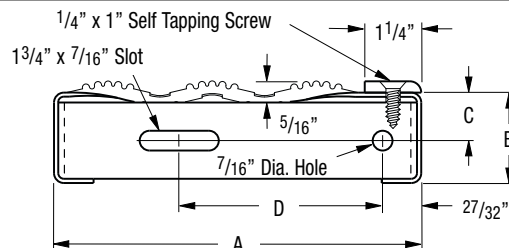
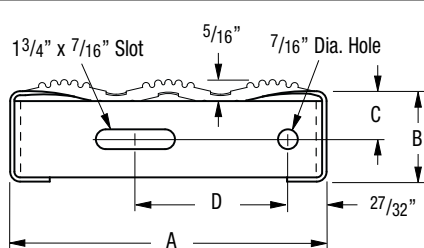
GRIP STRUT® STAIR TREADS

Standard Sizes and Recommended Spans (1)

Steel			Standard Stair Treads		Stair Treads with Abrasive Nosing	
Span in.	Gauge	Channel Depth - in.	Catalog Number	Size in.	Catalog Number	Size in.
Up to 30"	14	1 1/2"	T-21514	2-Diamond - 4 3/4"	--	--
			T-31514	3-Diamond - 7"	T-31514-N	3-Diamond - 8 1/8"
			T-41514	4-Diamond - 9 1/2"	T-41514-N	4-Diamond - 10 1/2"
			T-51514	5-Diamond - 11 3/4"	--	--
30" to 36"	14	1 1/2"	T-21514	2-Diamond - 4 3/4"	--	--
			T-31514	3-Diamond - 7"	T-31514-N	3-Diamond - 8 1/8"
			T-41514	4-Diamond - 9 1/2"	T-41514-N	4-Diamond - 10 1/2"
			T-51514	5-Diamond - 11 3/4"	--	--
36" to 42"	14 ga.	1 1/2"	T-21514	2-Diamond - 4 3/4"	--	--
			T-31514	3-Diamond - 7"	T-31514-N	3-Diamond - 8 1/8"
			T-41514	4-Diamond - 9 1/2"	T-41514-N	4-Diamond - 10 1/2"
			T-51514	5-Diamond - 11 3/4"	--	--
42" to 48"	14 ga.	2"	T-21514	2-Diamond - 4 3/4"	--	--
			T-31514	3-Diamond - 7"	T-31514-N	3-Diamond - 8 1/8"
			T-41514	4-Diamond - 9 1/2"	T-41514-N	4-Diamond - 10 1/2"
			T-51514	5-Diamond - 11 3/4"	--	--
Aluminum						
Up to 42"	.080"	2"	T-22012-A	2-Diamond - 4 3/4"	--	--
			T-32012-A	3-Diamond - 7"	T-32012-A-N	3-Diamond - 8 1/8"
			T-42012-A	4-Diamond - 9 1/2"	T-42012-A-N	4-Diamond - 10 1/2"
			T-52012-A	5-Diamond - 11 3/4"	--	--
Up to 48"	.100"	2"	T-22010-A*	2-Diamond - 4 3/4"	--	--
			T-32010-A*	3-Diamond - 7"	T-32010-A-N	3-Diamond - 8 1/8"
			T-42010-A*	4-Diamond - 9 1/2"	T-42010-A-N	4-Diamond - 10 1/2"
			T-52010-A*	5-Diamond - 11 3/4"	--	--
Stainless Steel						
Up to 30"	Type 316L 16 ga.	2"	T-42016-SL	4-Diamond - 9 1/2"	--	--
			T-52016-SL	5-Diamond - 11 3/4"	--	--
Up to 36"	Type 304 16 ga.	2"	T-42012-A	4-Diamond - 9 1/2"	--	--
			T-52012-A	5-Diamond - 11 3/4"	--	--

(1) Recommendations are based on approximate minimum loads of 300 lbs. concentrated; 100 lbs. uniform. Specific performance criteria may vary by municipality/building code body and should be locally checked prior to finalizing specifications.

* Available on special order.



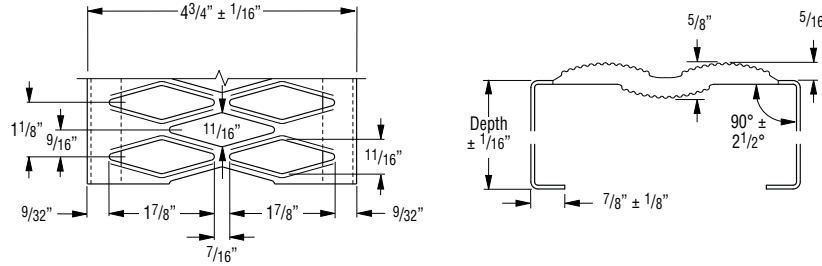
Steel, Aluminum and Stainless Steel (1)

Standard				With Abrasive Nosing			
A	B	C	D	A	B	C	D
4 3/4" (2-Diamond)	1 1/2" 2"	3/4" 1"	2 5/8" 2 5/8"	-- --	-- --	-- --	-- --
7" (3-Diamond)	1 1/2" 2"	3/4" 1"	3 3/8" 3 3/8"	8 1/8" (3-Diamond)	1 1/2" 2"	3/4" 1"	4 1/2" 4 1/2"
9 1/2" (4-Diamond)	1 1/2" 2"	3/4" 1"	5 7/8" 5 7/8"	10 1/2" (4-Diamond)	1 1/2" 2"	3/4" 1"	6 7/8" 6 7/8"
11 3/4" (5-Diamond)	1 1/2" 2"	3/4" 1"	8 1/8" 8 1/8"	-- --	-- --	-- --	-- --

(1) Stainless Steel not available in 2-Diamond or 3-Diamond widths.

GRIP STRUT® SAFETY PLANKS

2-DIAMOND PLANK - 4 3/4" WIDTH



Product Selection/Design Tables

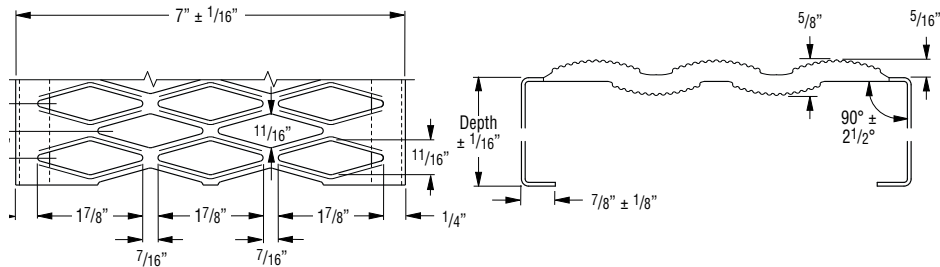
Allowable Loads and Deflections: U=Uniform Load (lb./ft.²) C= Concentrated Load (lb.) D=Deflection (in.)
 Spans to the left of heavy red line produce a deflection of 1/4" or less under a uniform load of 100 lb./ft.²

Material Gauge	Channel Depth in. (mm)	Weight lb./lin. ft. (kg/m)	Catalog Number	U	Span																		
					2'-0"	2'-6"	3'-0"	3'-6"	4'-0"	4'-6"	5'-0"	5'-6"	6'-0"	6'-6"	7'-0"	7'-6"	8'-0"	9'-0"	10'-0"	11'-0"	12'-0"		
Steel 14 ga.	1 1/2" (38.1)	2.3 (3.42)	21514	U	1324	849	591	435	334	265	215	179	151										
				D	.06	.10	.14	.20	.26	.32	.40	.49	.58										
				C	524	420	351	301	265	236	213	195	179										
	2" (50.8)	2.6 (3.87)	22014	U	2198	1409	980	721	553	438	356	295	248	212	184	161	142	113	93				
				D	.06	.09	.13	.17	.23	.29	.35	.43	.51	.60	.70	.81	.92	1.18	1.47				
				C	870	697	582	499	438	390	352	321	295	273	255	239	225	201	183				
	2 1/2" (63.5)	2.8 (4.17)	22514	U	2522	1616	1124	827	634	502	408	338	285	244	211	184	163	139	106	88	75		
				D	.04	.06	.08	.11	.14	.18	.23	.27	.33	.38	.45	.51	.59	.75	.94	1.14	1.38		
				C	998	800	667	573	502	447	404	368	338	313	292	273	257	231	210	193	178		
Steel 12 ga.	1 1/2" (38.1)	3.2 (4.76)	21512	U	1751	1123	782	576	443	351	286	237	200	172	149	131	116						
				D	.07	.11	.15	.21	.27	.35	.43	.52	.62	.74	.86	.99	1.14						
				C	693	556	464	399	350	313	283	258	238	221	206	194	183						
	2" (50.8)	3.6 (5.36)	22012	U	2792	1790	1245	917	703	557	453	375	317	271	235	205	181	145	119	99	85		
				D	.05	.08	.11	.16	.20	.26	.32	.39	.46	.55	.63	.73	.84	1.07	1.34	1.64	1.98		
				C	1105	886	739	635	557	496	448	409	376	348	325	305	287	258	235	216	201		
	2 1/2" (63.5)	4.0 (5.95)	22512	U	4179	2676	1860	1368	1049	830	673	557	469	400	346	302	266	211	172	143	121		
				D	.04	.06	.09	.13	.17	.21	.26	.32	.38	.44	.51	.59	.67	.86	1.07	1.30	1.55		
				C	1654	1324	1104	948	830	739	666	606	557	515	479	448	421	376	341	312	288		
Alum. Alloy 5052 .080"	1 1/2"* (38.1)	.85 (1.26)	21512-A	U	998	639	443	326	248	196	159	131	110	94									
				D	.10	.15	.22	.31	.40	.51	.63	.76	.90	1.08									
				C	395	316	263	226	197	175	157	143	131	121									
	2" (50.8)	.92 (1.37)	22012-A	U	1463	937	650	478	366	289	234	194	162	138	119								
				D	.08	.13	.18	.25	.33	.42	.52	.63	.74	.87	1.02								
				C	579	463	386	331	290	257	232	211	192	177	165								
	2 1/2"* (63.5)	1.00 (1.48)	22512-A	U	2199	1407	977	718	550	434	352	291	244	208	179	156	137						
				D	.07	.10	.15	.21	.28	.35	.43	.53	.63	.74	.85	.98	1.12						
				C	870	696	580	497	435	387	348	316	290	268	249	232	218						
Alum. Alloy 5052 .100"	1 1/2"* (38.1)	1.08 (1.60)	21510-A	U	1136	727	505	371	284	224	181	149	125	107									
				D	.09	.15	.22	.30	.39	.50	.63	.76	.90	1.08									
				C	450	360	300	257	225	200	179	162	149	137									
	2" (50.8)	1.20 (1.78)	22010-A	U	2049	1312	911	669	512	405	328	271	228	194	167	146	128						
				D	.09	.14	.20	.28	.37	.46	.58	.70	.83	.98	1.13	1.30	1.48						
				C	811	649	541	464	406	361	325	295	270	250	232	216	203						
	2 1/2"* (63.5)	1.31 (1.95)	22510-A	U	2820	1805	1253	921	705	557	451	373	313	267	230	201	176						
				D	.07	.11	.16	.22	.28	.36	.45	.54	.64	.76	.88	1.01	1.15						
				C	1116	893	744	638	558	496	446	406	372	343	319	298	279						

* Available on special order.

GRIP STRUT® SAFETY PLANKS

3-DIAMOND PLANK - 7" WIDTH



Product Selection/Design Tables

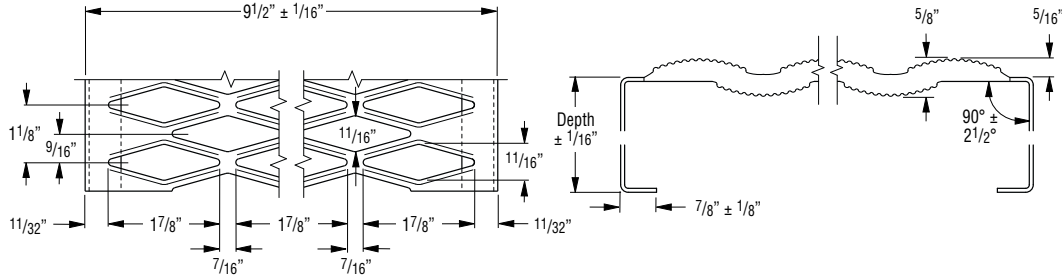
Allowable Loads and Deflections: U=Uniform Load (lb./ft.²) C= Concentrated Load (lb.) D=Deflection (in.)
 Spans to the left of heavy red line produce a deflection of 1/4" or less under a uniform load of 100 lb./ft.²

Material Gauge	Channel Depth in. (mm)	Weight lb./lin. ft. (kg/m)	Catalog Number	Span																			
				2'-0"	2'-6"	3'-0"	3'-6"	4'-0"	4'-6"	5'-0"	5'-6"	6'-0"	6'-6"	7'-0"	7'-6"	8'-0"	9'-0"	10'-0"	11'-0"	12'-0"			
Steel 14 ga.	1 1/2" (38.1)	3.0 (4.46)	31514	U	899	577	402	269	227	180	147	122	103										
				D	.06	.10	.14	.20	.26	.33	.40	.49	.59										
				C	524	421	351	302	265	237	214	196	180										
				D	.05	.08	.11	.16	.21	.26	.32	.39	.47										
	2" (50.8)	3.2 (4.76)	32014	U	1492	957	665	490	376	298	242	201	169	145	125	110	97	77	63				
				D	.06	.09	.13	.17	.23	.29	.35	.43	.51	.61	.71	.81	.93	1.19	1.49				
				C	871	697	582	500	439	391	353	322	296	275	256	240	226	203	185				
				D	.04	.07	.10	.14	.18	.23	.28	.34	.41	.48	.56	.65	.74	.95	1.19				
	2 1/2" (63.5)	3.5 (5.21)	32514	U	1712	1097	763	562	431	342	277	230	194	166	144	126	111	89	73	61	52		
				D	.04	.06	.08	.11	.14	.18	.23	.27	.33	.39	.45	.52	.59	.76	.94	1.16	1.40		
				C	999	800	668	574	503	448	405	369	340	315	293	275	259	233	212	195	181		
				D	.03	.04	.06	.09	.11	.15	.18	.22	.26	.31	.36	.41	.47	.61	.76	.93	1.12		
Steel 12 ga.	1 1/2" (38.1)	4.1 (6.10)	31512	U	1189	763	532	392	301	239	195	162	137	118	102	90	79						
				D	.07	.11	.15	.21	.27	.35	.43	.52	.63	.74	.87	1.00	1.15						
				C	694	556	465	400	352	314	284	260	240	223	208	196	185						
				D	.05	.08	.12	.17	.22	.28	.34	.42	.50	.59	.69	.80	.92						
	2" (50.8)	4.5 (6.70)	32012	U	1896	1216	846	623	478	379	308	256	216	185	160	140	124	99	82	68	58		
				D	.05	.08	.11	.16	.20	.26	.32	.39	.47	.55	.64	.74	.85	1.08	1.36	1.67	2.01		
				C	1106	886	740	636	558	498	450	410	378	350	327	307	289	260	238	219	203		
				D	.04	.06	.09	.12	.16	.21	.26	.31	.37	.44	.51	.59	.68	.87	1.09	1.33	1.61		
	2 1/2" (63.5)	4.9 (7.29)	32512	U	2836	1817	1263	929	712	564	457	379	319	272	235	206	181	144	118	98	83		
				D	.04	.06	.09	.13	.17	.21	.26	.32	.38	.44	.52	.59	.68	.86	1.07	1.31	1.57		
				C	1654	1325	1105	948	831	740	667	608	558	516	481	450	423	378	343	314	290		
				D	.03	.05	.07	.10	.13	.17	.21	.25	.30	.35	.41	.47	.54	.69	.86	1.05	1.25		
Alum. Alloy 5052 .080"	1 1/2" (38.1)	1.06 (1.58)	31512-A	U	667	443	301	221	168	133	108												
				D	.10	.15	.22	.31	.40	.51	.63												
				C	395	316	263	226	197	175	157												
				D	.08	.12	.18	.25	.32	.41	.50												
	2" (50.8)	1.15 (1.71)	32012-A	U	993	636	441	324	248	196	159	131	110	93	80								
				D	.08	.13	.18	.25	.33	.42	.52	.63	.74	.86	1.00								
				C	579	463	386	331	290	257	232	211	192	177	165								
				D	.06	.10	.15	.20	.27	.34	.42	.51	.59	.69	.80								
	2 1/2" (63.5)	1.24 (1.85)	32512-A	U	1492	955	663	487	373	295	239	197	166	141	122	106	93						
				D	.07	.10	.15	.21	.28	.35	.43	.53	.63	.74	.85	.98	1.12						
				C	812	696	580	497	435	387	348	316	290	268	249	232	218						
				D	.05	.08	.12	.17	.22	.28	.35	.42	.50	.59	.68	.78	.89						
3" (76.2)	1.33 (1.98)	33012-A	U	1833	1173	815	598	458	362	293	242	204	174	150	130	115							
			D	.06	.09	.14	.19	.25	.31	.39	.47	.56	.66	.77	.88	1.00							
			C	846	846	713	611	535	475	428	389	356	329	305	285	267							
			D	.03	.07	.11	.15	.20	.25	.31	.38	.45	.53	.61	.70	.80							
Alum. Alloy 5052 .100"	1 1/2" (38.1)	1.34 (1.99)	31510-A	U	771	494	343	252	193	152	122	101											
				D	.09	.15	.22	.30	.39	.50	.63	.76											
				C	450	360	300	257	225	200	179	162											
				D	.07	.12	.17	.24	.31	.40	.51	.61											
	2" (50.8)	1.46 (2.38)	32010-A	U	1391	890	618	454	348	275	223	184	155	132	114	99	87						
				D	.09	.14	.20	.28	.37	.46	.58	.70	.83	.98	1.13	1.30	1.48						
				C	811	649	541	464	406	361	325	295	270	250	232	216	203						
				D	.07	.11	.16	.22	.29	.37	.46	.56	.66	.78	.90	1.04	1.18						
	2 1/2" (63.5)	1.57 (2.34)	32510-A	U	1913	1225	850	625	478	378	306	253	213	181	156	136	120						
				D	.07	.11	.16	.22	.28	.36	.45	.54	.64	.76	.88	1.01	1.15						
				C	1116	893	744	638	558	496	446	406	372	343	319	298	279						
				D	.05	.09	.12	.17	.23	.29	.36	.43	.51	.60	.70	.81	.92						
3" (76.2)	1.68 (2.50)	33010-A	U	2470	1581	1098	807	618	488	395	327	274	234	202	176	154							
			D	.05	.08	.12	.17	.22	.28	.34	.42	.50	.59	.68	.78	.89							
			C	1309	1153	961	823	720	640	576	524	480	443	412	384	360							
			D	.04	.06	.10	.13	.17	.22	.27	.33	.40	.47	.54	.62	.71							

* Available on special order.

GRIP STRUT® SAFETY PLANKS

4-DIAMOND PLANK - 9 1/2" WIDTH



Product Selection/Design Tables

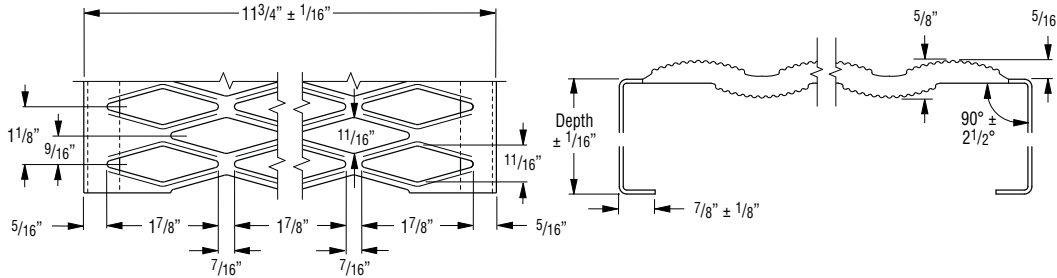
Allowable Loads and Deflections: U=Uniform Load (lb./ft.²) C= Concentrated Load (lb.) D=Deflection (in.)
Spans to the left of heavy red line produce a deflection of 1/4" or less under a uniform load of 100 lb./ft.²

Material Gauge	Channel Depth in. (mm)	Weight lb./ft. (kg/m)	Catalog Number	Span																				
				2'-0"	2'-6"	3'-0"	3'-6"	4'-0"	4'-6"	5'-0"	5'-6"	6'-0"	6'-6"	7'-0"	7'-6"	8'-0"	9'-0"	10'-0"	11'-0"	12'-0"				
Steel 14 ga.	1 1/2" (38.1)	3.6 (5.36)	41514	U	663	426	296	219	168	134	109	90	77											
				D	.06	.10	.14	.20	.26	.33	.41	.50	.59											
				C	525	421	352	303	266	238	215	197	182											
	2" (50.8)	3.8 (5.65)	42014	U	1100	705	491	362	278	220	179	148	125	107	93	81	72	58	47					
				D	.06	.09	.13	.17	.23	.29	.36	.43	.52	.61	.71	.82	.94	1.20	1.51					
				C	730	698	583	501	440	392	354	323	298	276	258	242	228	205	187					
	2 1/2" (63.5)	4.1 (6.10)	42514	U	1262	809	563	415	318	252	205	170	144	123	106	93	82	66	54	45				
				D	.04	.06	.08	.11	.14	.18	.23	.28	.33	.39	.45	.52	.60	.76	.95	1.17				
				C	730	730	669	574	504	449	406	370	341	316	295	277	261	235	214	197				
	Steel 12 ga.	1 1/2" (38.1)	5.0 (7.44)	41512	U	906	581	405	298	229	182	148	123	104	89	77	67	60						
					D	.07	.11	.16	.21	.28	.36	.44	.54	.64	.76	.89	1.02	1.17						
					C	718	575	481	413	363	324	292	267	246	228	213	200	189						
2" (50.8)		5.4 (8.04)	42012	U	1398	896	624	460	353	280	228	189	160	137	119	104	92	74	61	51	43			
				D	.05	.08	.11	.16	.20	.26	.32	.39	.47	.55	.65	.75	.85	1.10	1.38	1.69	2.03			
				C	1107	887	741	637	559	499	451	412	380	353	329	309	292	264	241	222	206			
2 1/2" (63.5)		5.7 (8.48)	42512	U	2090	1339	931	685	525	416	338	280	236	201	174	152	134	107	87	73	62			
				D	.04	.06	.09	.13	.17	.21	.26	.32	.38	.44	.52	.60	.68	.87	1.08	1.32	1.58			
				C	1400	1325	1106	949	832	741	668	609	559	518	482	452	425	380	345	316	293			
3" (76.2)		6.1 (9.08)	43012	U	2644	1694	1177	866	664	525	426	353	297	254	219	192	169	134	110	91	77			
				D	.04	.06	.08	.11	.14	.18	.22	.27	.32	.38	.44	.51	.58	.74	.92	1.12	1.35			
				C	1400	1400	1398	1200	1051	936	844	769	706	653	608	569	535	478	434	397	367			
Stainless 304 16 ga.	2" (50.8)	3.2 (4.76)	42016-S	U	720	462	322	238	183	145	118	98	83	71	59									
				D	.05	.08	.11	.16	.20	.26	.32	.39	.47	.55	.61									
				C	570	457	382	329	289	258	234	214	197	184	165									
Stainless 316L 16 ga.	2" (50.8)	3.2 (4.76)	42016-SL	U	626	400	278	204	156	123	100	82	69	59	51									
				D	.04	.06	.10	.13	.17	.22	.27	.32	.39	.45	.53									
				C	492	397	330	283	248	220	198	180	165	152	141									
Alum. Alloy 5052 .080"	1 1/2" (38.1)	1.28 (1.90)	41512-A	U	499	319	222	163	124	98														
				D	.10	.15	.22	.31	.40	.51														
				C	395	316	263	226	197	175														
	2" (50.8)	1.37 (2.03)	42012-A	U	732	468	325	239	183	145	117	97	81	69										
				D	.08	.13	.18	.25	.33	.42	.52	.63	.74	.87										
				C	568	463	386	331	290	257	232	211	192	177										
	2 1/2" (63.5)	1.46 (2.17)	42512-A	U	1099	704	489	359	275	217	176	145	122	104	90	78	69							
				D	.07	.10	.15	.21	.28	.35	.43	.53	.63	.74	.85	.98	1.12							
				C	568	568	568	497	435	387	348	316	290	268	249	232	218							
	3" (76.2)	1.55 (2.30)	43012-A	U	1350	864	600	441	338	267	216	179	150	128	110	96	84							
				D	.06	.09	.14	.19	.25	.31	.39	.47	.56	.66	.77	.88	1.00							
				C	568	568	568	568	535	475	428	389	356	329	305	285	267							
Alum. Alloy 5052 .100"	1 1/2" (38.1)	1.62 (2.41)	41510-A	U	568	364	253	186	142	112														
				D	.09	.15	.22	.30	.39	.50														
				C	450	360	300	257	225	200														
	2" (50.8)	1.74 (2.58)	42010-A	U	1025	656	455	335	256	202	164	136	114	97	84	73	64							
				D	.09	.14	.20	.28	.37	.46	.58	.70	.83	.98	1.13	1.30	1.48							
				C	811	649	541	464	406	361	325	295	270	250	232	216	203							
	2 1/2" (63.5)	1.85 (2.75)	42510-A	U	1410	902	627	460	352	278	226	186	157	133	115	100	88							
				D	.07	.11	.16	.22	.28	.36	.44	.54	.64	.76	.88	1.01	1.15							
				C	886	886	744	638	558	496	446	406	372	343	319	298	279							
	3" (76.2)	1.97 (2.93)	43010-A	U	1820	1165	809	594	455	360	291	241	202	172	149	129	114							
				D	.05	.08	.12	.17	.22	.28	.34	.42	.50	.59	.68	.78	.89							
				C	886	886	886	823	720	640	576	524	480	443	412	384	360							

* Available on special order.

GRIP STRUT® SAFETY PLANKS

5-DIAMOND PLANK - 11 3/4" WIDTH



Product Selection/Design Tables

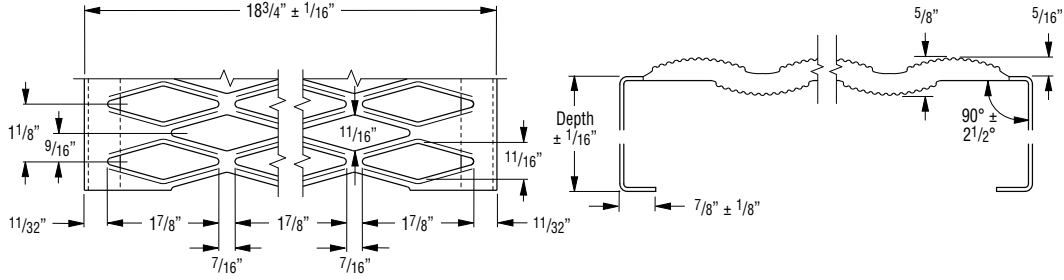
Allowable Loads and Deflections: U=Uniform Load (lb./ft.²) C= Concentrated Load (lb.) D=Deflection (in.)
 Spans to the left of heavy red line produce a deflection of 1/4" or less under a uniform load of 100 lb./ft.²

Material Gauge	Channel Depth in. (mm)	Weight lb./lin. ft. (kg/m)	Catalog Number	Span																					
				2'-0"	2'-6"	3'-0"	3'-6"	4'-0"	4'-6"	5'-0"	5'-6"	6'-0"	6'-6"	7'-0"	7'-6"	8'-0"	9'-0"	10'-0"	11'-0"	12'-0"					
Steel 14 ga.	1 1/2" (38.1)	4.2 (6.25)	51514	U	536	344	240	177	136	108	88	74	62												
				D	.06	.10	.14	.20	.26	.33	.41	.50	.60												
				C	525	422	353	304	267	239	216	198	183												
				D	.05	.08	.12	.16	.21	.26	.33	.40	.48												
	2" (50.8)	4.4 (6.55)	52014	U	890	571	397	293	225	178	145	120	102	87	76	66	59	47							
				D	.06	.09	.13	.17	.23	.29	.36	.43	.52	.61	.71	.83	.95	1.21							
				C	707	699	584	502	440	393	355	324	299	277	259	243	230	207							
				D	.04	.07	.10	.14	.18	.23	.29	.35	.42	.49	.57	.66	.76	.87	.97						
	2 1/2" (63.5)	4.7 (6.99)	52514	U	1021	655	456	336	258	204	166	138	116	100	86	76	67	54	44						
				D	.04	.06	.08	.11	.14	.18	.23	.28	.33	.39	.45	.52	.60	.77	.96						
				C	707	707	669	575	505	450	407	371	342	317	296	278	262	236	216						
				D	.02	.04	.06	.09	.12	.15	.18	.22	.26	.31	.36	.42	.48	.54	.62	.77					
Steel 12 ga.	1 1/2" (38.1)	5.9 (8.78)	51512	U	710	456	318	235	181	144	117	98	83	71	62	55	49								
				D	.07	.11	.15	.21	.27	.35	.44	.53	.64	.76	.89	1.03	1.18								
				C	695	558	467	402	354	317	287	263	244	227	213	201	190								
				D	.05	.08	.12	.17	.22	.28	.35	.43	.51	.60	.71	.82	.95								
	2" (50.8)	6.2 (9.23)	52012	U	1131	725	505	372	286	227	185	154	130	111	97	85	75	60	50	42					
				D	.05	.08	.11	.16	.20	.26	.32	.39	.47	.56	.65	.75	.86	1.11	1.39	1.70					
				C	1107	888	742	638	561	501	453	414	382	355	332	312	295	266	243	224					
				D	.04	.06	.09	.12	.16	.21	.26	.31	.38	.44	.52	.60	.69	.89	1.11	1.36					
	2 1/2" (63.5)	6.6 (9.82)	52512	U	1691	1083	753	554	425	337	273	226	185	154	141	123	109	87	71	59	53	50			
				D	.04	.06	.09	.13	.17	.21	.26	.32	.38	.45	.52	.60	.68	.87	1.09	1.33	1.60				
				C	1115	1115	1106	950	833	742	669	610	561	519	484	453	426	382	347	319	295				
				D	.02	.04	.07	.10	.13	.17	.21	.25	.30	.36	.41	.48	.55	.70	.87	1.06	1.28				
3" (76.2)	7.0 (10.40)	53012	U	2138	1370	952	701	537	425	345	286	241	206	178	155	137	109	89	74	63					
			D	.04	.06	.08	.11	.14	.18	.22	.27	.32	.38	.44	.51	.58	.74	.93	1.13	1.36					
			C	1115	1115	1115	1115	1052	937	845	770	707	654	609	570	537	480	436	399	369					
			D	.02	.03	.05	.08	.11	.15	.18	.22	.26	.31	.36	.41	.47	.60	.74	.90	1.09					
Stainless 304 16 ga.	2" (50.8)	3.7 (5.51)	52016-S	U	583	374	261	192	148	118	96	80	68	58	48										
				D	.05	.08	.11	.16	.20	.26	.32	.39	.47	.56	.68										
				C	464	458	323	330	290	259	235	215	199	185	165										
				D	.03	.06	.09	.12	.16	.21	.26	.32	.38	.45	.49										
Stainless 316L 16 ga.	2" (50.8)	3.7 (5.51)	52016-SL	U	406	324	225	165	126	100	81	66	56	47											
				D	.04	.06	.10	.13	.17	.22	.27	.32	.39	.45											
				C	398	397	330	283	248	220	198	180	165	152											
				D	.03	.05	.08	.10	.14	.17	.22	.26	.31	.36											
Alum. Alloy 5052 .080"	1 1/2" (38.1)	1.49 (2.22)	51512-A	U	403	255	179	132	100																
				D	.10	.15	.22	.31	.40																
				C	395	316	263	226	197																
				D	.08	.12	.18	.25	.32																
	2" (50.8)	1.59 (2.36)	52012-A	U	592	379	263	193	148	117	95	78													
				D	.08	.13	.18	.25	.33	.42	.52	.63													
				C	466	466	386	331	290	257	232	211													
				D	.05	.10	.15	.20	.27	.34	.42	.51													
	2 1/2" (63.5)	1.67 (2.48)	52512-A	U	889	569	395	290	222	176	142	118	99	84	73	63									
				D	.07	.10	.15	.21	.28	.35	.43	.53	.63	.74	.85	.98									
				C	466	466	466	466	435	387	348	316	290	268	249	232									
				D	.02	.05	.10	.16	.22	.28	.35	.42	.50	.59	.68	.78									
3" (76.2)	1.75 (2.60)	53012-A	U	951	699	485	357	273	216	175	144	121	103	89	78	68									
			D	.05	.09	.14	.19	.25	.31	.39	.47	.56	.66	.77	.88	1.00									
			C	466	466	466	466	466	466	428	389	356	329	305	285	267									
			D	.02	.04	.07	.11	.17	.24	.31	.38	.45	.53	.61	.70	.80									
Alum. Alloy 5052 .100"	1 1/2" (38.1)	1.88 (2.79)	51510-A	U	459	294	204	150	115	91															
				D	.09	.15	.22	.30	.39	.50															
				C	450	360	300	257	225	200															
				D	.07	.12	.17	.24	.31	.40															
	2" (50.8)	2.00 (2.98)	52010-A	U	829	530	368	271	207	164	133	110	92	78	68	59									
				D	.09	.14	.20	.28	.37	.46	.58	.70	.83	.98	1.13	1.30									
				C	714	649	541	464	406	361	325	295	270	250	232	216									
				D	.06	.11	.16	.22	.29	.37	.46	.56	.66	.78	.90	1.04									
	2 1/2" (63.5)	2.11 (3.14)	52510-A	U	1140	730	507	372	285	225	182	151	127	105	93	81	71								
				D	.07	.11	.16	.22	.28	.36	.45	.54	.64	.76	.88	1.01	1.15								
				C	714	714	714	638	558	496	446	406	372	343	319	298	279								
				D	.03	.07	.12	.17	.23	.29	.36	.43	.51	.60	.70	.81	.92								
3" (76.2)	2.22 (3.30)	53010-A	U	1458	942	654	481	368	291	235	195	164	139	120	105	92									
			D	.05	.08	.12	.17	.22	.28	.34	.42	.50	.59	.68	.78	.89									
			C	714	714	714	714	714	640	576	524	480	443	412	384	360									
			D	.02	.04	.07	.12	.17	.22	.27	.33	.40	.47	.54	.62	.71									

* Available on special order.

GRIP STRUT® SAFETY PLANKS

8-DIAMOND PLANK - 18 3/4" WIDTH



Product Selection/Design Tables

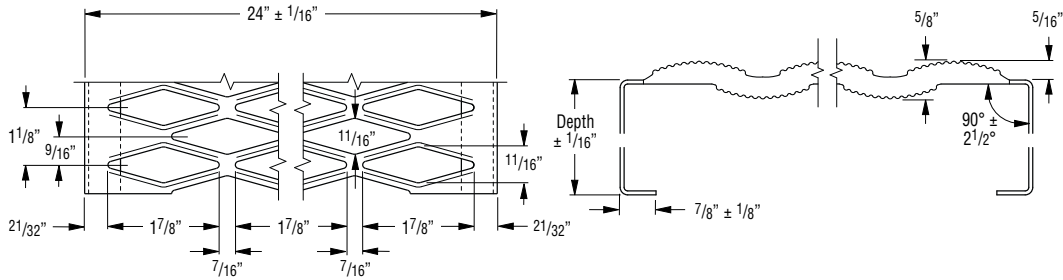
Allowable Loads and Deflections: U=Uniform Load (lb./ft.²) C= Concentrated Load (lb.) D=Deflection (in.)
 Spans to the left of heavy red line produce a deflection of 1/4" or less under a uniform load of 100 lb./ft.²

Material Gauge	Channel Depth in. (mm)	Weight lb./lin. ft. (kg/m)	Catalog Number	Span																					
				2'-0"	2'-6"	3'-0"	3'-6"	4'-0"	4'-6"	5'-0"	5'-6"	6'-0"	6'-6"	7'-0"	7'-6"	8'-0"	9'-0"	10'-0"	11'-0"	12'-0"					
Steel 14 ga.	1 1/2" (38.1)	6.1 (9.1)	81514	U	337	217	151	112	86	69	56	47													
				D	.33	.27	.26	.29	.33	.38	.45	.55													
				C	263	211	178	153	135	121	110	101													
	2" (50.8)	6.3 (9.4)	82014	U	540	358	250	184	142	113	92	76	65	55	48	42									
				D	.48	.37	.34	.32	.34	.38	.43	.50	.58	.66	.77	.87									
				C	437	349	292	251	220	198	179	164	152	141	132	124									
	2 1/2" (63.5)	6.6 (9.8)	82514	U	540	411	286	211	162	129	105	87	74	63	56	48	43								
				D	.46	.39	.35	.28	.27	.28	.31	.35	.39	.44	.50	.57	.64								
				C	450	402	335	287	252	225	205	188	173	161	151	142	134								
Steel 12 ga.	1 1/2" (38.1)	8.5 (12.6)	81512	U	446	287	201	148	115	91	75	63	53	46	40										
				D	.27	.22	.22	.26	.32	.39	.47	.56	.67	.80	.92										
				C	359	280	235	203	179	161	146	135	125	117	110										
	2" (50.8)	8.9 (13.2)	82012	U	710	456	318	235	181	144	117	98	83	71	62	54	48								
				D	.31	.25	.23	.25	.28	.31	.37	.44	.51	.60	.68	.79	.90								
				C	554	444	371	319	282	253	229	210	194	181	169	160	151								
	2 1/2" (63.5)	9.2 (13.7)	82512	U	810	680	473	348	267	212	172	143	120	103	89	78	69	55	45						
				D	.33	.31	.27	.26	.27	.29	.32	.37	.42	.49	.55	.63	.72	.90	1.12						
				C	800	663	553	475	416	371	334	307	282	262	244	229	216	194	177						
	2 1/2" (63.5)	9.6 (14.3)	83012	U	810	810	598	440	337	267	217	180	152	130	112	98	87	69	57	47	40				
				D	.32	.35	.30	.27	.26	.28	.31	.34	.39	.43	.49	.56	.62	.78	.96	1.17	1.40				
				C	800	800	699	600	526	468	422	385	353	327	307	288	271	243	221	203	189				
Alum. Alloy 5052 .080"	1 1/2" (38.1)	2.11 (3.13)	81512-A	U	253	162	112	83																	
				D	.49	.40	.39	.44																	
				C	198	158	132	113																	
	2" (50.8)	2.20 (3.27)	82012-A	U	308	237	165	121	93	73	59	49													
				D	.54	.50	.44	.44	.47	.53	.61	.71													
				C	290	232	193	166	145	129	116	106													
	2 1/2" (63.5)	2.29 (3.40)	82512-A	U	308	308	248	182	139	110	89	74	62	53											
				D	.51	.57	.54	.49	.50	.52	.57	.65	.73	.83											
				C	350	348	290	249	218	194	174	158	145	134											
	3" (76.2)	2.39 (3.55)	83012-A	U	308	308	308	223	171	135	109	90	76	65	56	49									
				D	.50	.54	.62	.54	.52	.52	.56	.61	.68	.76	.86	.96									
				C	350	350	350	306	268	238	214	195	178	165	153	143									
Alum. Alloy 5052 .100"	1 1/2" (38.1)	2.68 (3.98)	81510-A	U	288	184	128	94	72	57															
				D	.41	.36	.36	.40	.47	.56															
				C	225	180	150	129	113	100															
	2" (50.8)	2.79 (4.15)	82010-A	U	457	332	231	170	130	103	83	69	58	49											
				D	.59	.51	.46	.47	.52	.57	.67	.78	.89	1.03											
				C	406	325	271	232	203	181	163	148	135	125											
	2 1/2" (63.5)	2.91 (4.33)	82510-A	U	457	457	317	233	179	141	114	94	79	68	58	51	45								
				D	.55	.62	.51	.48	.48	.52	.58	.64	.73	.84	.94	1.07	1.20								
				C	550	447	372	319	279	248	223	203	186	172	160	149	140								
	3" (76.2)	3.02 (4.50)	83010-A	U	457	457	410	301	231	182	148	122	102	87	75	66	58								
				D	.53	.57	.58	.51	.48	.48	.51	.56	.61	.69	.76	.85	.95								
				C	550	550	481	412	360	320	288	262	240	222	206	192	180								

* Available on special order.

GRIP STRUT® SAFETY PLANKS

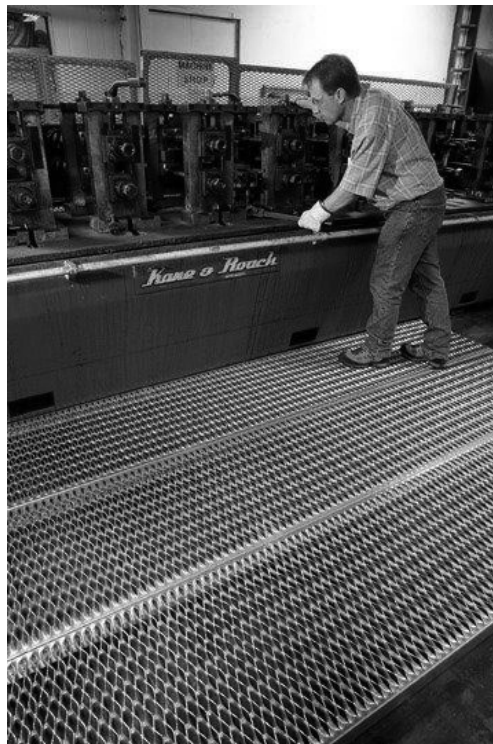
10-DIAMOND PLANK - 24" WIDTH



Product Selection/Design Tables

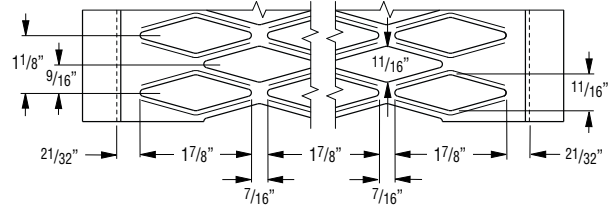
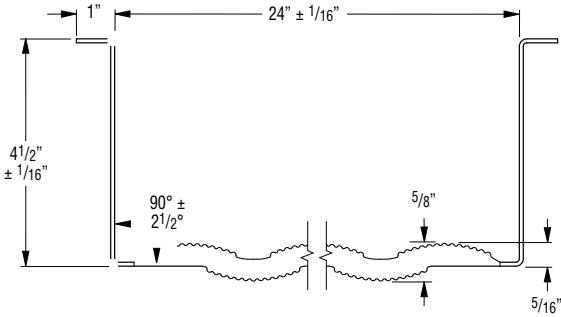
Allowable Loads and Deflections: U=Uniform Load (lb./ft.²) C= Concentrated Load (lb.) D=Deflection (in.)
 Spans to the left of heavy red line produce a deflection of 1/4" or less under a uniform load of 100 lb./ft.²

Material Gauge	Channel Depth in. (mm)	Weight lb./lin. ft. (kg/m)	Catalog Number	Span																		
				2'-0"	2'-6"	3'-0"	3'-6"	4'-0"	4'-6"	5'-0"	5'-6"	6'-0"	6'-6"	7'-0"	7'-6"	8'-0"	9'-0"	10'-0"	11'-0"	12'-0"		
Steel 14 ga.	2" (50.8)	7.4 (11.0)	102014	U	300	300	228	168	128	102	82	68	57	49	42							
				D	.46	.48	.42	.38	.38	.41	.44	.49	.55	.62	.70							
				C	400	400	343	294	257	229	206	187	172	158	147							
	3" (76.2)	7.9 (11.8)	103014	U	300	300	300	264	202	160	130	107	90	77	66	58	51	40				
				D	.42	.43	.46	.44	.39	.36	.35	.36	.39	.44	.45	.49	.54	.65				
				C	400	400	400	400	400	360	324	295	270	249	232	216	203	180				
Steel 12 ga.	2" (50.8)	19.4 (15.5)	102012	U	475	416	289	212	162	128	104	86	72	62	53	46						
				D	.40	.39	.33	.31	.31	.34	.38	.44	.48	.56	.63	.71						
				C	650	520	434	372	325	289	260	237	217	200	186	174						
	3" (76.2)	11.1 (16.5)	103012	U	475	475	475	392	300	237	192	159	133	114	98	85	75	59	48			
				D	.38	.39	.42	.38	.36	.34	.35	.37	.39	.43	.47	.52	.58	.70	.85			
				C	900	900	800	686	600	534	480	437	400	369	343	320	300	267	240			
				D	.34	.35	.33	.29	.27	.26	.26	.26	.26	.27	.29	.30	.32	.36	.41			



GRIP STRUT® SAFETY WALKWAYS

10-DIAMOND WALKWAY - 24" WIDTH



Product Selection/Design Tables

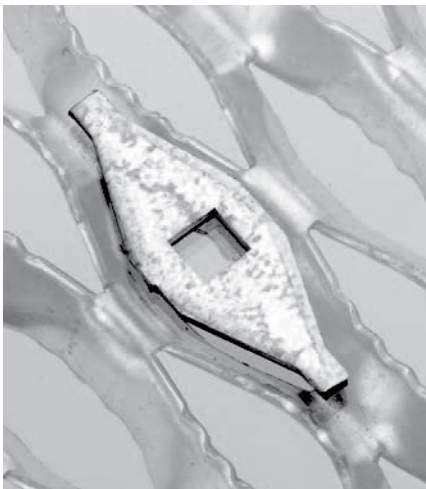
Allowable Loads and Deflections: U=Uniform Load (lb./ft.²) C= Concentrated Load (lb.) D=Deflection (in.)
Spans to the left of heavy red line produce a deflection of 1/4" or less under a uniform load of 100 lb./ft.²

Material Gauge	Weight lb./in. ft. (kg/m)	Catalog Number		Span																
				2'-0"	2'-6"	3'-0"	3'-6"	4'-0"	4'-6"	5'-0"	5'-6"	6'-0"	6'-6"	7'-0"	7'-6"	8'-0"	9'-0"	10'-0"	11'-0"	12'-0"
Steel 14 ga	8.9 (13.2)	104514-U	U	300	300	300	300	300	263	213	176	148	126	109	95	83	66	53	43	
			D	.41	.41	.42	.45	.48	.47	.42	.40	.40	.41	.43	.45	.47	.55	.64	.75	
			C	400	400	400	400	400	400	400	400	400	400	380	355	333	296	266	242	
			D	.32	.33	.33	.33	.34	.35	.36	.38	.39	.41	.42	.41	.41	.42	.44	.47	
Steel 12 ga	12.5 (18.6)	104512-U	U	475	475	475	475	475	420	340	281	236	201	173	151	133	105	85	70	59
			D	.37	.37	.38	.40	.43	.43	.39	.37	.37	.39	.41	.44	.51	.59	.69	.80	
			C	900	900	900	900	900	850	773	709	654	607	567	531	472	425	387	354	
			D	.34	.34	.35	.35	.36	.37	.37	.35	.34	.33	.33	.33	.33	.33	.35	.37	.40

Grip Strut® Engineering & Strut Data Available Upon Request

Anchoring Device Clip

Diamond Anchor is shaped to fit in diamond opening. Punched to receive head bolt with square shank. Does not include bolts, nuts or washers. Standard finish is hot-dipped galvanized before fabrication. Also available in 304 stainless steel.



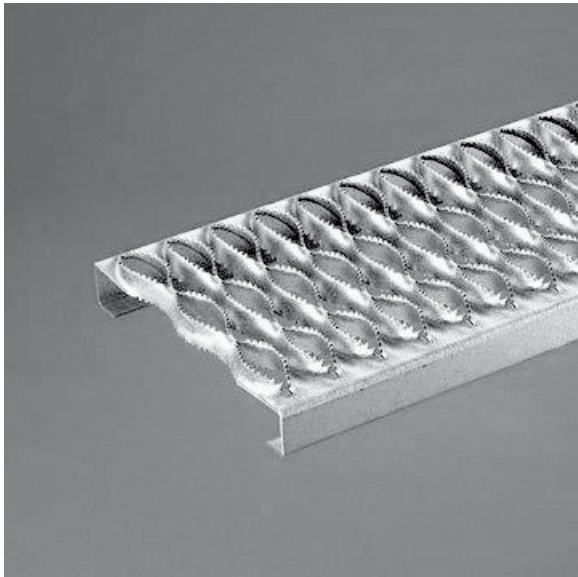
HEAVY-DUTY GRIP STRUT® SAFETY FLOORING

HEAVY-DUTY GRIP STRUT® PLANKS AVAILABLE IN LENGTHS UP TO 24'

Availability of Heavy-Duty Grip Strut Planks*

Material	Thickness	Walkway Width				
		36"	27 ³ / ₄ "	24"	13 ³ / ₄ "	9 ¹ / ₄ "
Steel	11 ga.	✓	✓	✓	✓	✓
	10 ga.	✓	✓	✓	✓	✓
	9 ga.	✓	✓	✓	✓	✓
Aluminum	.125"	--	--	--	✓	✓

* All in depths of 2", 2¹/₂", 3" and 4".



HEAVY-DUTY GRIP STRUT® WALKWAYS AVAILABLE IN LENGTHS UP TO 24'

Availability of Heavy-Duty Grip Strut Walkways*

Material	Thickness	Walkway Width		
		36"	30"	24"
Steel	11 ga.	✓	✓	✓
	10 ga.	✓	✓	✓
	9 ga.	✓	✓	✓
Aluminum	.125"	--	✓	✓

* Standard toeboard depth of 5".

Engineering & Load Data Provided Upon Request