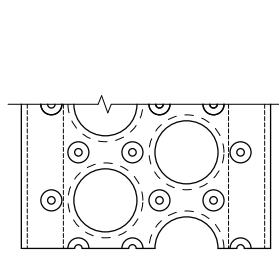
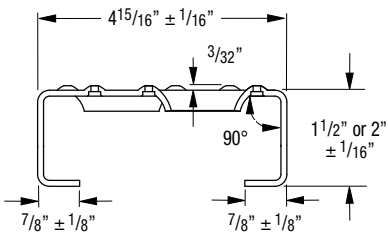
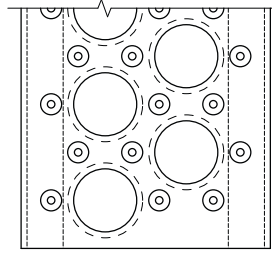


PERF-O GRIP® SAFETY PLANKS

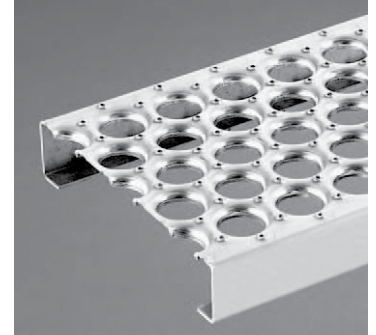
2-HOLE PLANK - 5" WIDTH



Perf-O Grip



Perf-O Grip 2



Plank Selection/Design Tables

Allowable Loads and Deflections: U=Uniform Load (lb./ft. ²) C= Concentrated Load (lb.) D=Deflection (in.)

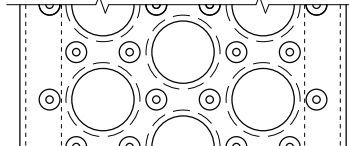
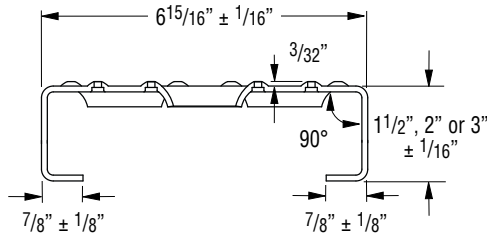
Material Gauge	Channel Depth in. (mm)	Weight lb./lin. ft. (kg/m)	Catalog Number	Span																		
				2'-0"	2'-6"	3'-0"	3'-6"	4'-0"	4'-6"	5'-0"	5'-6"	6'-0"	6'-6"	7'-0"	7'-6"	8'-0"	9'-0"	10'-0"	11'-0"	12'-0"		
Steel 13 ga.	1 1/2" (38.1)	2.6 (3.8)	P21513 * A21513	U	2008	1287	895	659	505	400	325	269	227	194	168	146	130	103	85	70	60	
				D	.05	.08	.11	.15	.20	.25	.31	.38	.45	.53	.62	.71	.82	1.04	1.30	1.57	1.90	
	2" (50.8)	2.8 (4.1)	P22013 * A22013	U	3035	1944	1352	994	762	603	490	405	341	292	253	221	194	155	126	105	89	
				D	.04	.06	.09	.12	.15	.19	.24	.29	.34	.41	.47	.54	.62	.79	.98	1.20	1.43	
	Alum. 0.125"	2" (50.8)	1.3 (1.9)	P220125 * A220125	U	2910	1863	1294	950	728	575	466	385	323	276	237	207	182	143	116	96	81
					D	.08	.12	.18	.24	.32	.40	.50	.60	.72	.84	.98	1.12	1.27	1.61	1.99	2.41	2.87
Stainless Steel 16 ga.	2" (50.8)	2.1 (3.1)	P22016S * A22016S	U	2781	2049	1422	1046	800	632	512	424	355	303	262	227	200	159	128	106	89	
				D	.05	.08	.12	.16	.21	.26	.32	.39	.46	.54	.63	.72	.82	1.04	1.28	1.56	1.85	
Stainless Steel 14 ga.	2" (50.8)	2.1 (3.1)	P22014S * A22014S	U	3684	2410	1673	1230	942	744	602	498	418	357	307	267	235	186	151	125	105	
				D	.06	.08	.13	.17	.22	.27	.34	.41	.49	.57	.66	.77	.87	1.10	1.36	1.65	1.95	
				U	1569	1255	1046	896	784	697	627	570	523	482	448	418	392	349	314	286	262	
				D	.05	.07	.10	.14	.17	.22	.27	.33	.39	.46	.54	.61	.70	.88	1.09	1.31	1.57	

* Perf-O Grip : To order standard Perf-O Grip Grating use part number "Pxxxx".

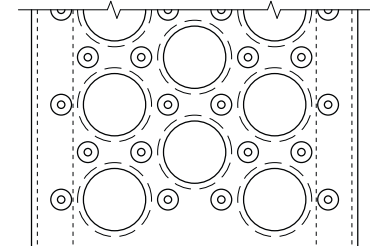
Perf-O Grip 2 : To order New Perf-O Grip 2™ Grating use part number "Axxxx". End margins are standard on new Perf-O Grip 2™ Grating 2-Hole through 6-Hole Plank only (5" through 12" widths). Standard lengths are 10'-0" and 12'-0". Longer lengths of 20'-0" and 24'-0" are available on both Perf-O Grip and Perf-O Grip 2™. Cons

PERF-O GRIP®-SAFETY PLANKS

2-HOLE PLANK - 7" WIDTH



Perf-O-Grip



Perf-O-Grip 2

Plank Selection/Design Tables

Allowable Loads and Deflections: U=Uniform Load (lb./ft.²) C= Concentrated Load (lb.) D=Deflection (in.)

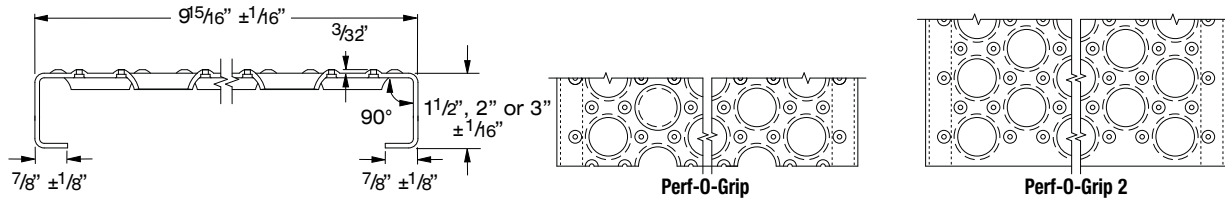
Material Gauge	Channel Depth in. (mm)	Weight lb./in. ft. (kg/m)	Catalog Number		Span																
					2'-0"	2'-6"	3'-0"	3'-6"	4'-0"	4'-6"	5'-0"	5'-6"	6'-0"	6'-6"	7'-0"	7'-6"	8'-0"	9'-0"	10'-0"	11'-0"	12'-0"
Steel 13 ga.	1 1/2" (38.1)	3.0 (4.4)	P31513* A31513	U	1536	984	685	504	387	306	249	206	174	149	129	112	100	79	65	55	46
				D	.05	.07	.11	.14	.19	.24	.29	.36	.43	.50	.58	.67	.77	.98	1.22	1.51	1.81
				C	914	731	609	522	457	406	366	332	305	283	263	246	232	208	190	174	162
	2" (50.8)	3.3 (4.9)	P32013* A32013	U	1965	1473	1024	754	578	458	371	307	259	222	192	167	147	118	96	80	68
				D	.03	.06	.08	.11	.14	.18	.23	.27	.33	.38	.44	.51	.58	.74	.92	1.13	1.36
				C	1369	1096	913	783	685	609	548	498	456	421	391	366	344	308	279	257	237
Steel 11 ga.	1 1/2" (38.1)	4.2 (6.2)	P31511* A31511	U	1981	1269	883	650	498	394	320	265	224	191	165	144	128	101	83	69	59
				D	.05	.07	.11	.15	.19	.24	.30	.36	.43	.51	.59	.68	.78	.98	1.22	1.50	1.81
				C	1165	932	777	666	582	518	467	426	391	362	337	316	297	266	241	222	205
	2" (50.8)	4.5 (6.7)	P32011* A32011	U	2899	1978	1375	1012	776	614	498	411	347	302	261	228	201	160	130	108	92
				D	.03	.06	.08	.11	.15	.19	.23	.28	.34	.40	.47	.54	.62	.78	.97	1.18	1.42
				C	1762	1410	1175	1032	904	805	726	661	607	573	533	499	469	420	380	348	321
3" (76.2)	4.8 (7.1)	P33011* A33011	U	5806	3716	2581	1898	1454	1150	932	771	649	554	479	417	367	291	236	196	166	
			D	.03	.04	.06	.08	.11	.13	.17	.20	.24	.28	.33	.37	.43	.54	.67	.81	.98	
			C	3188	2550	2125	1822	1594	1417	1275	1159	1132	1050	976	913	857	764	690	630	581	
Alum. 0.125"	2" (50.8)	1.5 (2.2)	P320125* A320125	U	2138	1491	1035	761	582	460	372	308	258	221	190	166	146	115	93	77	65
				D	.07	.14	.20	.27	.35	.44	.54	.66	.78	.92	1.07	1.23	1.39	1.76	2.18	2.64	3.14
				C	1509	1207	1006	862	755	671	604	549	503	464	431	402	377	335	302	274	252
Stainless Steel 16 ga.	2" (50.8)	2.4 (3.6)	P32016S* A32016S	U	1419	1399	971	714	546	432	350	289	243	207	178	155	137	107	88	72	61
				D	.03	.07	.10	.13	.17	.22	.27	.33	.39	.46	.53	.61	.70	.88	1.09	1.31	1.56
				C	1275	1021	850	729	638	567	510	464	425	392	365	341	319	283	255	232	213
Stainless Steel 14 ga.	2" (50.8)	2.8 (4.1)	P32014S* A32014S	U	1879	1571	1091	801	614	485	393	325	273	232	200	175	153	121	98	81	69
				D	.04	.07	.10	.14	.18	.22	.27	.33	.40	.47	.54	.62	.70	.89	1.10	1.33	1.59
				C	1432	1145	954	818	715	637	573	521	478	440	409	382	358	318	287	261	239

* Perf-O Grip: To order standard Perf-O Grip Grating use part number "Pxxxx".

Perf-O Grip 2: To order New Perf-O Grip 2™ Grating use part number "Axxxx". End margins are standard on new Perf-O Grip 2™ Grating 2-Hole through 6-Hole Plank only (5" through 12" widths). Standard lengths are 10'-0" and 12'-0". Longer lengths of 20'-0" and 24'-0" are available on both Perf-O Grip and Perf-O Grip 2™. Consult factory.

PERF-O GRIP® SAFETY PLANKS

5-HOLE PLANK - 10" WIDTH



Plank Selection/Design Tables

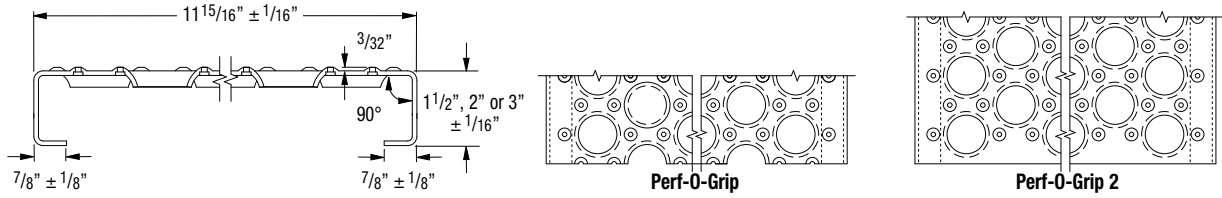
Allowable Loads and Deflections: U=Uniform Load (lb./ft.) C=Concentrated Load (lb.) D=Deflection (in.)

Material Gauge	Channel Depth in. (mm)	Weight lb./lin. ft. (kg/m)	Catalog Number		Span																
					2'-0"	2'-6"	3'-0"	3'-6"	4'-0"	4'-6"	5'-0"	5'-6"	6'-0"	6'-6"	7'-0"	7'-6"	8'-0"	9'-0"	10'-0"	11'-0"	12'-0"
Steel 13 ga.	1 1/2" (38.1)	3.5 (5.2)	P51513* A51513	U	963	745	517	380	291	230	187	154	129	110	95	83	73	58	46	38	32
				D	.04	.08	.11	.15	.19	.24	.30	.36	.43	.51	.59	.67	.77	.98	1.20	1.44	1.71
				C	855	684	645	554	485	431	388	353	323	298	277	259	242	216	191	176	162
	2" (50.8)	3.9 (5.8)	P52013* A52013	U	1735	1110	771	568	435	344	281	232	196	167	144	126	110	88	70	60	50
				D	.04	.06	.08	.11	.15	.18	.23	.28	.33	.39	.45	.52	.59	.75	.91	1.14	1.34
				C	1297	1038	865	741	648	645	584	532	489	453	422	392	368	327	297	267	245
Steel 11 ga.	1 1/2" (38.1)	4.5 (6.7)	P51511* A51511	U	1385	888	618	455	349	276	225	186	157	134	117	101	90	71	59	48	41
				D	.05	.07	.10	.14	.18	.23	.29	.35	.41	.49	.57	.65	.75	.95	1.20	1.45	1.74
				C	1086	888	772	663	582	518	467	426	392	363	338	318	299	268	244	225	205
	2" (50.8)	5.1 (7.6)	P52011* A52011	U	2261	1447	1005	739	567	449	364	300	253	216	186	162	142	112	91	75	63
				D	.04	.06	.08	.11	.15	.19	.23	.28	.33	.39	.45	.52	.59	.75	.92	1.12	1.32
				C	1670	1336	1113	954	888	823	758	689	631	583	541	505	473	421	378	344	316
3" (76.2)	5.1 (7.6)	P53011* A53011	U	4214	2697	1873	1376	1053	832	674	557	468	399	344	300	263	208	168	139	117	
			D	.03	.04	.06	.08	.10	.13	.16	.19	.23	.27	.31	.35	.41	.52	.64	.77	.92	
			C	3095	2476	2064	1769	1548	1376	1238	1126	1032	952	927	902	878	781	702	638	585	
Alum. 0.125"	2" (50.8)	1.8 (2.7)	P520125* A520125	U	1048	1022	710	522	400	316	256	212	178	153	131	115	101	80	65	54	46
				D	.05	.12	.18	.24	.31	.40	.49	.59	.71	.83	.96	1.10	1.26	1.59	1.96	2.37	2.83
				C	1431	1145	954	818	715	636	572	520	477	440	409	382	358	318	286	260	238
Stainless Steel 16 ga.	2" (50.8)	2.7 (4.0)	P52016S* A52016S	U	1418	907	630	463	354	280	226	187	158	134	115	101	88	70	57	47	39
				D	.04	.07	.10	.13	.17	.21	.26	.32	.38	.44	.52	.59	.67	.85	1.06	1.28	1.50
				C	1148	918	765	656	574	510	459	430	393	363	337	315	295	263	237	215	197
Stainless Steel 14 ga.	2" (50.8)	3.2 (4.7)	P52014S* A52014S	U	1296	1037	864	741	648	576	530	485	445	410	381	355	334	296	266	242	222
				D	.04	.07	.10	.13	.17	.22	.27	.32	.38	.45	.52	.60	.68	.86	1.07	1.28	1.54
				C	1296	1037	864	741	648	576	530	485	445	410	381	355	334	296	266	242	222

* Perf-O Grip : To order standard Perf-O Grip Grating use part number "Pxxxx".
 Perf-O Grip 2 : To order New Perf-O Grip 2™ Grating use part number "Axxxx". End margins are standard on new Perf-O Grip 2™ Grating 2-Hole through 6-Hole Plank only (5" through 12" widths). Standard lengths are 10'-0" and 12'-0".
 Longer lengths of 20'-0" and 24'-0" are available on both Perf-O Grip and Perf-O Grip 2™. Consult factory.

PERF-O GRIP® SAFETY PLANKS

6-HOLE PLANK - 12" WIDTH



Plank Selection/Design Tables

Allowable Loads and Deflections: U=Uniform Load (lb./ft. ²) C= Concentrated Load (lb.) D=Deflection (in.)

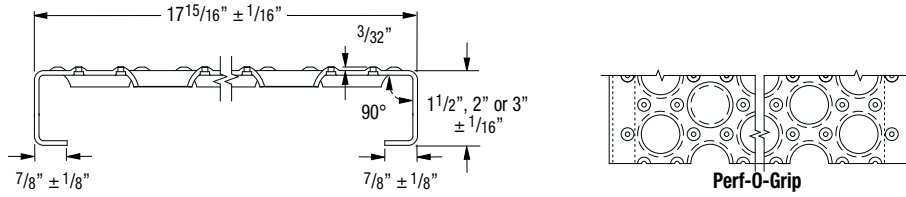
Material Gauge	Channel Depth in. (mm)	Weight lb./lin. ft. (kg/m)	Catalog Number	Span																		
				2'-0"	2'-6"	3'-0"	3'-6"	4'-0"	4'-6"	5'-0"	5'-6"	6'-0"	6'-6"	7'-0"	7'-6"	8'-0"	9'-0"	10'-0"	11'-0"	12'-0"		
Steel 13 ga.	1 1/2" (38.1)	4.3 (6.4)	P61513* A61513	U	669	655	456	336	258	204	166	138	117	100	87	76	67	54	44	37	31	
				D	.03	.07	.10	.13	.17	.22	.27	.33	.40	.47	.55	.63	.72	.82	1.02	1.16	1.43	1.68
				C	960	819	684	588	516	460	416	380	349	325	303	285	268	241	218	198	182	
	2" (50.8)	4.6 (6.8)	P62013* A62013	U	1510	966	671	493	378	299	243	201	170	145	126	110	97	77	63	53	45	
				D	.03	.05	.07	.10	.13	.16	.20	.25	.29	.35	.40	.46	.53	.68	.85	1.03	1.25	
				C	1442	1154	961	862	756	673	608	555	509	472	440	413	388	349	317	291	270	
Steel 11 ga.	1 1/2" (38.1)	5.3 (7.9)	P61511* A61511	U	986	739	515	378	291	230	188	156	131	112	97	85	75	60	50	41	35	
				D	.03	.06	.09	.12	.16	.21	.25	.31	.37	.43	.50	.57	.65	.82	1.02	1.25	1.50	
				C	1231	985	821	703	615	547	492	448	410	379	352	328	308	274	246	227	210	
	2" (50.8)	5.5 (8.2)	P62011* A62011	U	1937	1240	861	633	486	385	312	259	218	186	161	140	124	99	80	67	57	
				D	.03	.05	.07	.10	.13	.16	.20	.24	.29	.34	.40	.46	.52	.67	.83	1.01	1.22	
				C	1881	1505	1292	1109	971	865	781	712	654	604	563	527	496	444	403	389	341	
3" (76.2)	6.2 (9.2)	P63011* A63011	U	3828	2450	1701	1250	957	757	614	507	427	365	315	274	242	192	156	130	108		
			D	.02	.04	.05	.07	.10	.12	.15	.18	.22	.25	.29	.34	.39	.49	.61	.74	.87		
			C	3448	2759	2299	1971	1724	1533	1405	1396	1282	1185	1102	1030	968	864	781	714	652		
Alum. 0.125"	2" (50.8)	2.1 (3.1)	P620125* A620125	U	1463	936	650	478	366	290	235	194	163	140	120	104	93	73	60	49	41	
				D	.08	.12	.17	.23	.30	.38	.47	.57	.68	.79	.92	1.05	1.20	1.52	1.88	2.27	2.70	
Stainless Steel 16 ga.	2" (50.8)	3.2 (4.7)	P62016S* A62016S	U	1289	825	573	421	322	255	206	170	143	122	105	91	80	64	51	42	35	
				D	.04	.07	.10	.13	.17	.22	.27	.33	.39	.46	.53	.61	.69	.88	1.08	1.30	1.54	
				C	1252	1002	835	715	626	556	501	469	430	397	368	343	322	286	257	234	215	
	2" (50.8)	3.8 (5.6)	P62014S* A62014S	U	1455	931	647	475	365	288	233	193	162	138	119	104	82	65	54	46	39	
				D	.04	.07	.10	.13	.17	.21	.26	.32	.38	.44	.51	.59	.65	.83	1.02	1.23	1.47	
				C	1416	1133	944	809	708	629	583	529	486	448	416	389	365	323	291	265	242	

* Perf-O Grip : To order standard Perf-O Grip Grating use part number "Pxxxxx".

Perf-O Grip 2 : To order New Perf-O Grip 2™ Grating use part number "Axxxxx". End margins are standard on new Perf-O Grip 2™ Grating 2-Hole through 6-Hole Plank only (5" through 12" widths). Standard lengths are 10'-0" and 12'-0". Longer lengths of 20'-0" and 24'-0" are available on both Perf-O Grip and Perf-O Grip 2™. Cons

PERF-O GRIP® SAFETY PLANKS

10-HOLE PLANK - 18" WIDTH

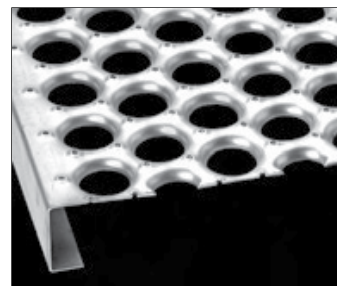


Plank Selection/Design Tables

Allowable Loads and Deflections: U=Uniform Load (lb./ft. ²) C= Concentrated Load (lb.) D=Deflection (in.)

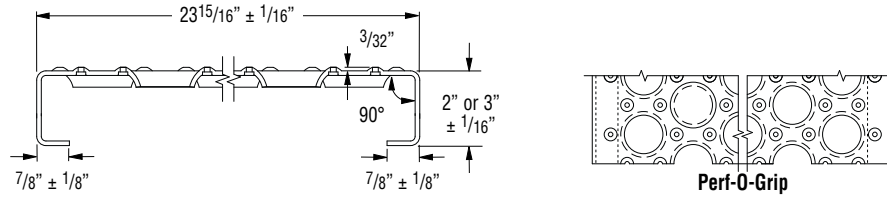
Material Gauge	Channel Depth in. (mm)	Weight lb./lin. ft. (kg/m)	Catalog Number		Span																
					2'-0"	2'-6"	3'-0"	3'-6"	4'-0"	4'-6"	5'-0"	5'-6"	6'-0"	6'-6"	7'-0"	7'-6"	8'-0"	9'-0"	10'-0"	11'-0"	12'-0"
					U	D	C	D	U	D	C	D	U	D	C	D	U	D	C	D	U
Steel 13 ga.	1 1/2" (38.1)	5.7 (8.5)	P101513	U	714	457	317	233	179	142	116	96	82	69	60	52	45	36	29	24	21
				D	.04	.07	.10	.13	.17	.21	.26	.32	.39	.45	.52	.60	.68	.86	1.05	1.27	1.56
				C	964	771	642	551	495	481	434	397	366	337	314	293	274	243	220	199	183
	2" (50.8)	6.0 (8.9)	P102013	U	1072	686	476	350	268	212	173	143	121	103	90	78	69	55	44	36	31
				D	.03	.05	.07	.10	.13	.16	.20	.24	.29	.34	.40	.46	.53	.67	.82	.98	1.19
				C	1452	1162	968	830	726	645	581	528	509	489	470	439	411	366	329	299	274
Steel 11 ga.	1 1/2" (38.1)	6.8 (10.1)	P101511	U	781	500	347	255	196	156	127	105	89	76	66	58	52	41	34	29	25
				D	.04	.06	.09	.12	.15	.19	.24	.29	.34	.40	.47	.53	.61	.77	.96	1.20	1.45
				C	1257	1006	838	718	629	559	503	457	419	387	359	335	314	279	253	234	219
	2" (50.8)	7.1 (10.5)	P102011	U	1250	800	555	408	314	249	201	167	141	121	104	91	80	64	53	44	37
				D	.03	.05	.07	.09	.12	.15	.18	.22	.26	.31	.35	.41	.46	.59	.74	.91	1.08
				C	1924	1539	1283	1099	962	855	770	700	641	592	550	514	484	434	395	363	337
	3" (76.2)	7.9 (11.7)	P103011	U	2675	1712	1189	873	669	528	428	354	297	254	219	190	167	132	107	89	74
				D	.02	.04	.05	.07	.09	.11	.14	.17	.20	.24	.28	.31	.36	.45	.56	.68	.81
				C	3531	2825	2354	2018	1766	1569	1412	1284	1177	1141	1106	1070	1003	892	802	730	669
Alum. 0.125"	2" (50.8)	2.8 (4.1)	P1020125	U	992	635	441	324	248	196	158	131	110	94	81	70	62	49	40	33	27
				D	.07	.10	.16	.21	.28	.35	.44	.53	.63	.74	.86	.98	1.12	1.42	1.75	2.11	2.52
				C	1652	1322	1102	944	826	734	661	601	551	508	472	441	413	367	330	300	275

Perf-O Grip : To order standard Perf-O Grip Grating use part number "Pxxxxx". Standard lengths are 10'-0" and 12'-0". Longer lengths of 20'-0" and 24'-0" are available.



PERF-O GRIP® SAFETY PLANKS

13-HOLE PLANK - 24" WIDTH



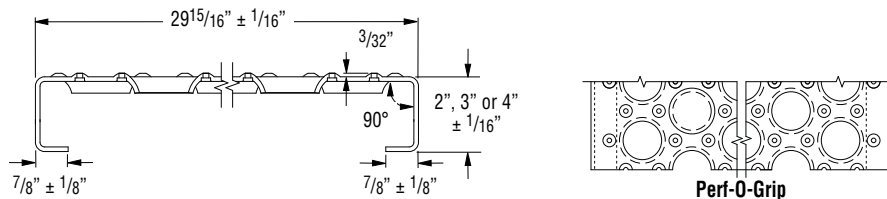
Plank Selection/Design Tables

Allowable Loads and Deflections: U=Uniform Load (lb./ft.²) C= Concentrated Load (lb.) D=Deflection (in.)

Material Gauge	Channel Depth in. (mm)	Weight lb./in. ft. (kg/m)	Catalog Number	Span																	
				2'-0"	2'-6"	3'-0"	3'-6"	4'-0"	4'-6"	5'-0"	5'-6"	6'-0"	6'-6"	7'-0"	7'-6"	8'-0"	9'-0"	10'-0"	11'-0"	12'-0"	
Steel 11 ga.	2" (50.8)	8.9 (13.2)	P132011	U	1094	700	486	357	273	216	175	145	123	105	91	79	70	56	45	38	33
				D	.03	.05	.06	.09	.12	.15	.18	.22	.26	.31	.36	.41	.47	.60	.75	.92	1.13
				C	2092	1674	1395	1196	1046	930	837	761	697	644	598	558	540	504	459	423	393
	3" (76.2)	9.8 (8.914.5)	P133011	U	1971	1261	876	644	493	389	315	261	219	187	161	141	124	99	80	67	57
				D	.02	.03	.04	.06	.08	.10	.12	.15	.18	.21	.24	.28	.32	.40	.50	.61	.73
				C	3792	3033	2528	2167	1896	1685	1517	1379	1264	1167	1083	1011	948	843	758	689	632
				D	.01	.02	.03	.04	.05	.07	.09	.10	.12	.15	.17	.19	.22	.30	.38	.46	.54

Perf-O Grip: To order standard Perf-O Grip Grating use part number "Pxxxxx". Standard lengths are 10'-0" and 12'-0". Longer lengths of 20'-0" and 24'-0" are available.

16-HOLE PLANK - 30" WIDTH



Plank Selection/Design Tables

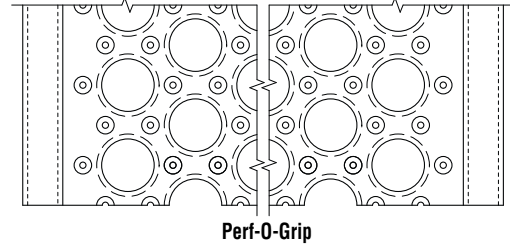
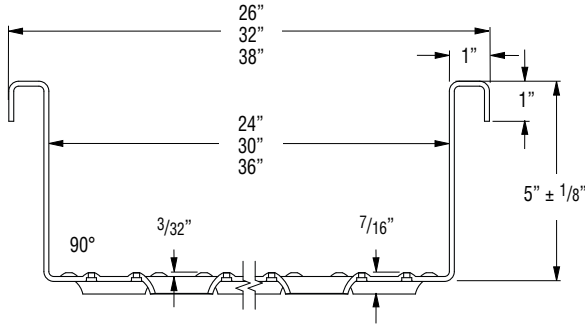
Allowable Loads and Deflections: U=Uniform Load (lb./ft.²) C= Concentrated Load (lb.) D=Deflection (in.)

Material Gauge	Channel Depth in. (mm)	Weight lb./in. ft. (kg/m)	Catalog Number	Span																	
				2'-0"	2'-6"	3'-0"	3'-6"	4'-0"	4'-6"	5'-0"	5'-6"	6'-0"	6'-6"	7'-0"	7'-6"	8'-0"	9'-0"	10'-0"	11'-0"	12'-0"	
Steel 11 ga.	2" (50.8)	11.8 (17.5)	P162011	U	956	612	425	312	239	189	153	126	106	91	77	68	60	47	38	32	27
				D	.02	.03	.04	.05	.07	.09	.11	.13	.16	.18	.21	.24	.28	.35	.43	.52	.62
				C	2564	2051	1709	1465	1282	1140	1026	932	855	789	733	684	641	570	513	466	427
	3" (76.2)	12.7 (18.9)	P163011	U	1413	904	628	461	353	279	226	187	157	134	116	100	89	70	57	46	39
				D	.02	.03	.04	.06	.08	.10	.12	.14	.17	.20	.23	.26	.30	.38	.47	.57	.67
				C	3802	3041	2534	2172	1901	1690	1521	1382	1267	1170	1086	1014	950	845	760	691	634
	4" (101.6)	13.5 (20.1)	P164011	U	2240	1434	996	731	560	443	358	296	249	212	183	159	140	111	91	75	64
				D	.01	.02	.03	.04	.06	.07	.09	.11	.13	.15	.17	.20	.23	.29	.36	.44	.52
				C	5838	4670	3892	3336	2919	2595	2335	2123	1946	1796	1668	1557	1459	1297	1168	1061	973
				D	.01	.02	.02	.03	.04	.05	.07	.08	.09	.11	.13	.15	.17	.21	.26	.32	.38

Perf-O Grip: To order standard Perf-O Grip Grating use part number "Pxxxxx". Standard lengths are 10'-0" and 12'-0". Longer lengths of 20'-0" and 24'-0" are available.

PERF-O GRIP® SAFETY WALKWAYS

WALKWAY - 24", 30" & 36" WIDTHS



Walkway Selection/Design Tables (Note: Consult factory for data on 36" width)

Allowable Loads and Deflections: U=Uniform Load (lb./ft.²) C= Concentrated Load (lb.) D=Deflection (in.)

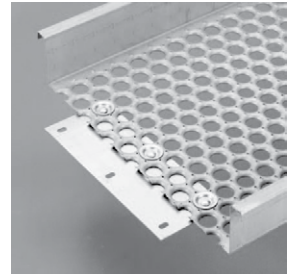
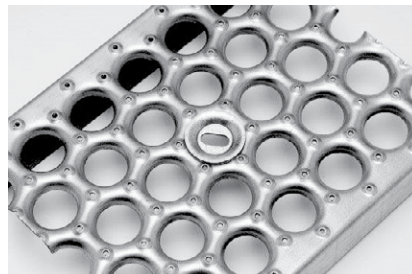
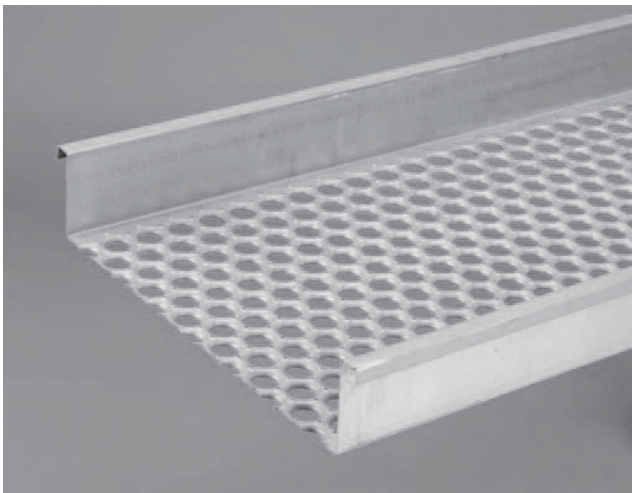
Material Gauge	Channel Depth in. (mm)	Weight lb./lin. ft. (kg/m)	Catalog Number	Span																	
				2'-0"	2'-6"	3'-0"	3'-6"	4'-0"	4'-6"	5'-0"	5'-6"	6'-0"	6'-6"	7'-0"	7'-6"	8'-0"	9'-0"	10'-0"	11'-0"	12'-0"	
				U	D	C	D	U	D	C	D	U	D	C	D	U	D	C	D	U	D
Steel 11 ga.	5" (127.0)	11.8 (17.5)	P135011W	U	5751	3681	2556	1878	1438	1136	920	760	639	544	469	409	359	284	230	190	160
				D	.02	.02	.04	.05	.06	.08	.10	.12	.14	.16	.19	.22	.25	.31	.39	.47	.56
				C	9504	7603	6336	5431	4752	4224	3802	3456	3168	2924	2715	2534	2376	2112	1901	1728	1584
				D	.01	.01	.02	.03	.04	.05	.06	.07	.08	.10	.11	.13	.15	.19	.23	.28	.34
	5" (127.0)	13.6 (20.2)	P165011W	U	3868	2475	1719	1263	967	764	619	511	430	366	316	275	242	191	155	128	107
				D	.01	.02	.03	.04	.05	.06	.08	.10	.12	.13	.16	.18	.20	.26	.32	.39	.46
				C	9534	7627	6356	5448	4767	4237	3813	3467	3178	2933	2724	2542	2383	2119	1907	1733	1589
				D	.00	.01	.02	.03	.04	.05	.06	.07	.08	.10	.11	.13	.15	.19	.23	.28	.33

Perf-O Grip: To order standard Perf-O Grip Grating use part number "Pxxxxx". Standard lengths are 10'-0" and 12'-0". Longer lengths of 20'-0" and 24'-0" are available.

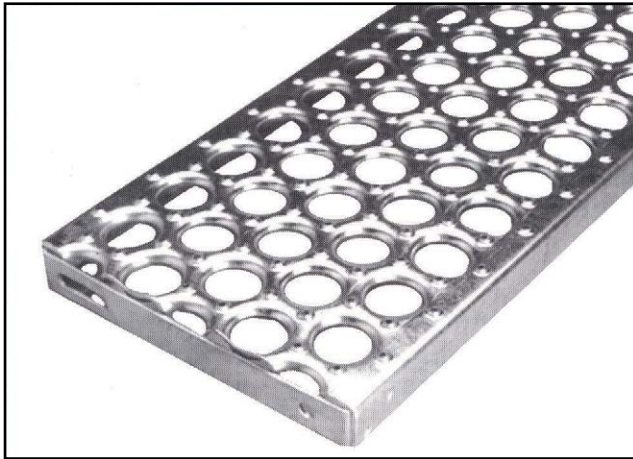
BOLT SEATS

Perf-O Grip Bolt Seats provide a secure anchor of the grating to structural supports. The standard bolt seat features oblong holes specifically designed to ensure a vertical anchor (with a 3/8" bolt) even if the hole is off concentrically by as much as 1/4".

Available in mill-galvanized steel, aluminum and stainless steel. Hardware is not provided.



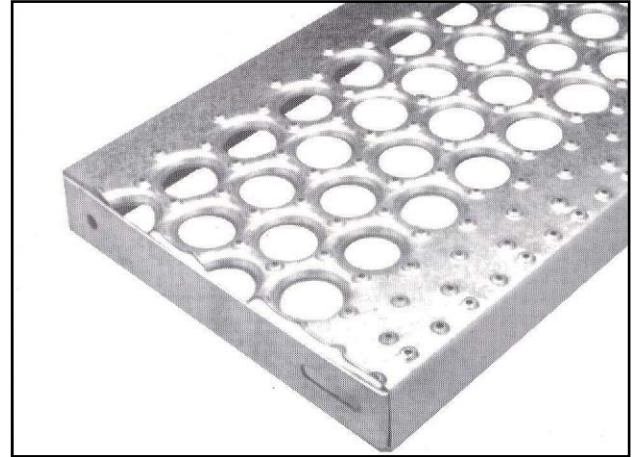
PERF-O GRIP® STAIR TREADS



Perf-O-Grip Stair Treads (standard)

Specify original Perf-O-Grip or Perf-O-Grip 2 Stair Treads. All treads have welded ends for attachment to stringers.

- Mill-galvanized steel: 11 ga and 13 ga.
- Hot rolled, pickled and oiled carbon steel: 11 ga. and 13 ga.
- 24", 30" and 36" lengths.
- 5", 7" 10" and 12" (nominal) widths.
- 1 1/2" and 2" channel heights.

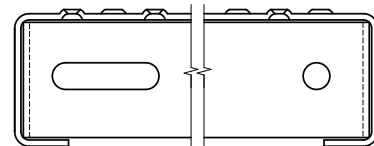


Stair Treads (custom)

Stair Treads are also available with Traction Tread™ and other options.

Carrier Plates

Carrier Plates allow you to create your own custom stair treads. They are sold by the pair (2 plates = one pair).



Traction Tread Carrier Plate

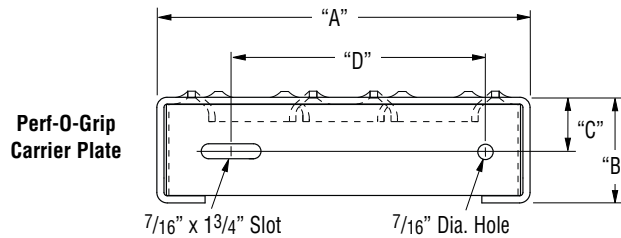


Table for Perf-O-Grip Treads

Product	Nominal Width	"A"	"B"	"C"	"D"
2-Hole Tread	5" (127mm)	4 15/16" (125mm)	1 1/2" (38mm)	3/4" (19mm)	2" (51mm)
		4 15/16" (125mm)	2" (51mm)	1" (25mm)	2" (51mm)
3-Hole Tread	7" (178mm)	6 15/16" (176mm)	1 1/2" (38mm)	3/4" (19mm)	4" (102mm)
		6 15/16" (176mm)	2" (51mm)	1" (25mm)	4" (102mm)
5-Hole Tread	10" (254mm)	9 15/16" (254mm)	1 1/2" (38mm)	3/4" (19mm)	7" (178mm)
		9 15/16" (254mm)	2" (51mm)	1" (25mm)	7" (178mm)
6-Hole Tread	12" (305mm)	11 15/16" (303mm)	1 1/2" (38mm)	3/4" (19mm)	9" (227mm)
		11 15/16" (303mm)	2" (51mm)	1" (25mm)	9" (227mm)