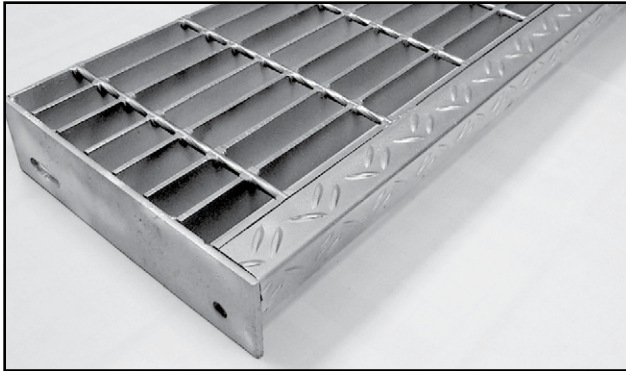
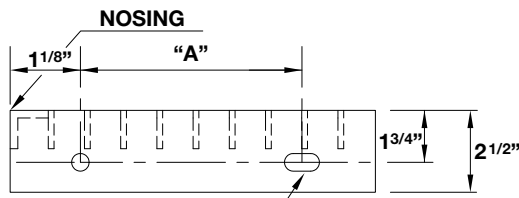


# STAIR TREADS

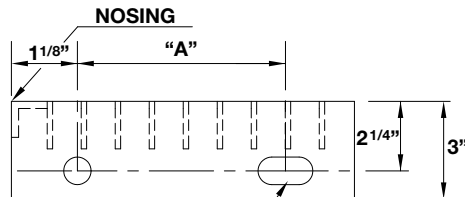


**CROSS SECTION:  
GRATING DEPTH UP TO 1-1/4"**



7/16" DIAMETER  
HOLE & SLOT

**CROSS SECTION:  
GRATING DEPTH FROM 1-1/2" TO 1-3/4"  
AND ALL ALUMINUM TREADS**



7/16" DIAMETER  
HOLE & SLOT

Steel Treads Bearing Bar Size In Inches	Maximum Tread Length*			
	19-4 (1-3/16") On-Center		15-4 (15/16") On-Center	
	Plain	Serrated	Plain	Serrated
1" x 1/8"	2' 7"	2' 3"	3' 0"	2' 6"
1" x 3/16"	3' 5"	2' 10"	4' 0"	3' 4"
1-1/4" x 3/16"	4' 8"	4' 2"	5' 1"	4' 6"
1-1/2" x 3/16"	5' 6"	5' 3"	5' 6"	5' 6"

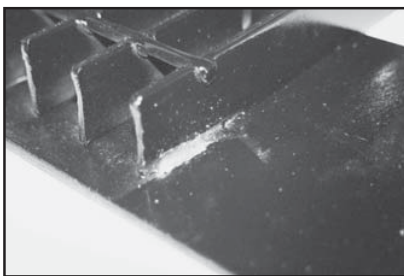
Aluminum Treads Bearing Bar Size In Inches	Maximum Tread Length*			
	19-4 (1-3/16") On-Center		15-4 (15/16") On-Center	
	Plain	Serrated	Plain	Serrated
1" x 3/16"	2' 4"	N.R.	2' 6"	N.R.
1-1/4" x 3/16"	2' 10"	2' 7"	3' 1"	2' 9"
1-1/2" x 3/16"	3' 6"	3' 2"	3' 10"	3' 6"
1-3/4" x 3/16"	4' 3"	3' 10"	4' 8"	4' 3"

Aluminum I-Bars Bearing Bar Size In Inches	Maximum Tread Length*	
	19-4 (1-3/16") On-Center	15-4 (15/16") On-Center
	1" I-Bar	2' 4"
1-1/4" I-Bar	2' 10"	3' 1"
1-1/2" I-Bar	3' 6"	3' 10"
1-3/4" I-Bar	4' 3"	4' 8"

\*Maximum tread length based on 300lb. Concentrated load on front 5" of tread at center of tread length and deflection limitation of 1/240 of length.

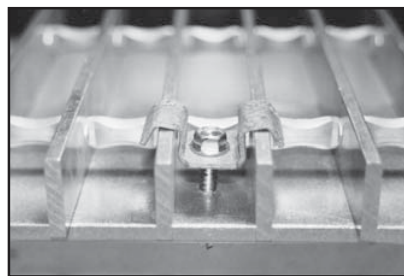
Standard Tread Widths		Dimension
Bearing Bar Centers		A
19-4(1-3/16")	15-4(15/16")	
6-3/16"	6-1/8"	2-1/2"
7-3/8"	7-1/16"	4-1/2"
8-9/16"	8"	4-1/2"
9-3/4"	8-15/16"	7"
10-15/16"	9-7/8"	7"
12-1/8"	10-13/16"	7"

## GRATING ATTACHMENT METHODS



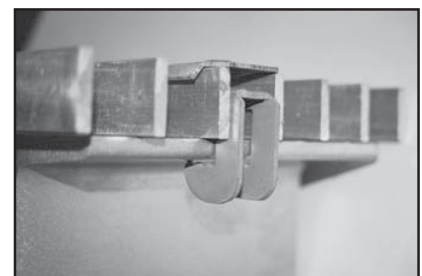
**Welded**

Recommended for permanent installation.



**Saddle Clip**

May be attached with self drilling TEK® screws or bolt and nut. Available galvanized steel, stainless steel or aluminum.



**G-Clip®**

Friction Fastener that enables no welding or drilling into support steel. Available galvanized or stainless steel.